

OTDR Report (1310 nm (9 μm))

General Information

File name:	22_1310.trc	Customer:	ADNOC
Test date:	14-Feb-24	Company:	PAN ARABIA
Test time:	4:07 PM	Fiber ID:	22
Cable ID:	FAR5 to SS6A (C) B (A-B)		
Job ID:	0500831		
Comments:	END TO END TEST		

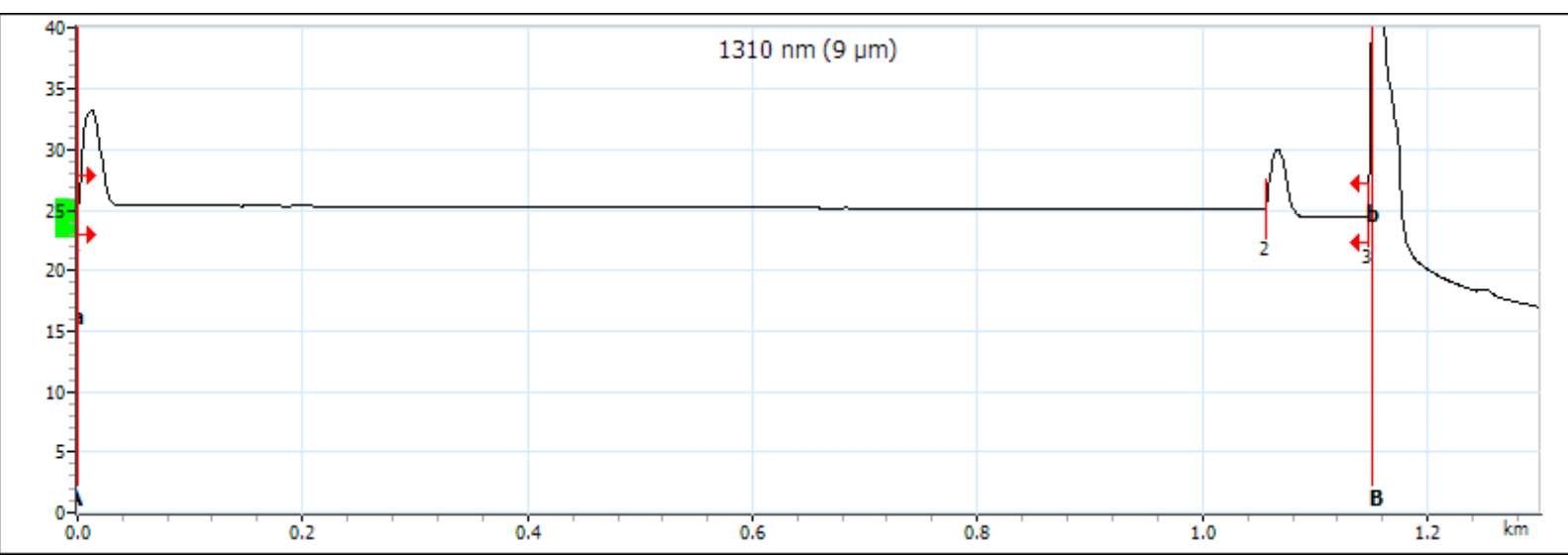
Locations

	Location A	Location B
Location	FAR5	SS6A
Operator	PANDA	HABEEB
Model	MAX-720C-Q1-EA-EI	
Serial number	1206159	
Calibration date	29-Mar-23 (UTC)	

Results

Span length:	1.1480 km	Average loss:	0.841 dB/km	Injection level:	25.4 dB
Span loss:	0.965 dB	Average splice loss:	---		
Span ORL:	39.17 dB	Maximum splice loss:	---		

Graph



Markers

Marker	Position (km)	Value (dB)	A-B LSA attenuation:	0.772 dB/km	A-B average loss:	-7.362 dB/km
a	0.0000	25.431	A-B LSA loss:	0.888 dB	4-point Event Loss:	-8.870 dB
A	0.0000	25.431	A-B ORL:	37.57 dB	Maximum reflectance:	-43.6 dB
B	1.1502	33.898				
b	1.1502	33.898				

OTDR Report (1310 nm (9 μm))

Event Table

Type	No.	Pos./Length (km)	Loss (dB)	Reflectance (dB)	Attenuation (dB/km)	Cumulative (dB)
First Connector	1	0.0000	---	-43.6		0.000
Section		1.0561	0.362		0.343	0.362
Reflective	2	1.0561	0.567	-49.7		0.930
Section		0.0919	0.035		0.384	0.965
Reflective	3	1.1480	---	> -23.5		0.965

Macrobend

Position (km)	Delta Loss (dB)

Pass/Fail Thresholds

	1310 nm (9 μm)

Test Parameters

	A → B
Wavelength (nm)	1310 nm (9 μm)
Range (km)	1.3000
Pulse (ns)	100
Duration (s)	5

Test Settings

	A → B	Macrobend Wavelengths	Macrobend Delta Loss (dB)
IOR	1.467700		
Backscatter (dB)	-79.45		
Helix factor (%)	0.00		
Splice loss detection threshold (dB)	0.020		
Reflectance detection threshold (dB)	-72.0		
End-of-fiber detection threshold (dB)	5.000		

OTDR Report (1550 nm (9 μm))

General Information

File name:	22_1550.trc	Customer:	ADNOC
Test date:	14-Feb-24	Company:	PAN ARABIA
Test time:	4:07 PM	Fiber ID:	22
Cable ID:	FAR5 to SS6A (C) B (A-B)		
Job ID:	0500831		
Comments:	END TO END TEST		

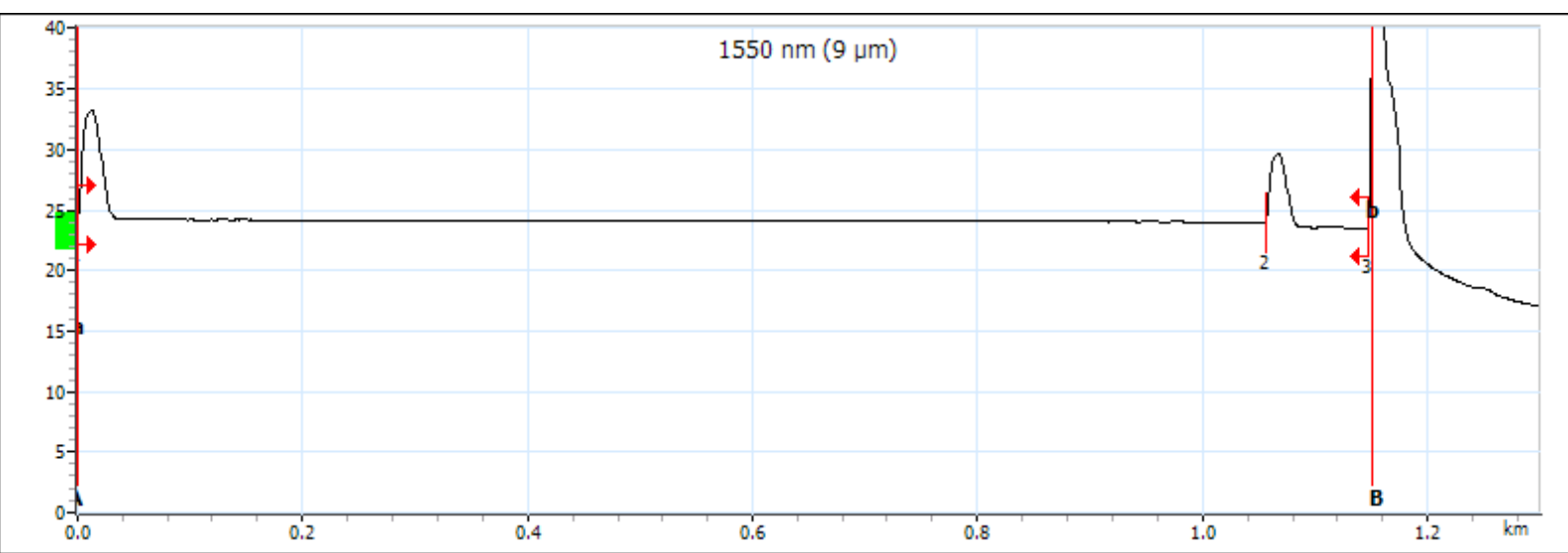
Locations

	Location A	Location B
Location	FAR5	SS6A
Operator	PANDA	HABEEB
Model	MAX-720C-Q1-EA-EI	
Serial number	1206159	
Calibration date	29-Mar-23 (UTC)	

Results

Span length:	1.1478 km	Average loss:	0.593 dB/km	Injection level:	24.2 dB
Span loss:	0.681 dB	Average splice loss:	---		
Span ORL:	41.25 dB	Maximum splice loss:	---		

Graph



Markers

Marker	Position (km)	Value (dB)	A-B LSA attenuation:	0.642 dB/km	A-B average loss:	-8.295 dB/km
a	0.0000	24.677	A-B LSA loss:	0.739 dB	4-point Event Loss:	-9.771 dB
A	0.0000	24.677	A-B ORL:	38.95 dB	Maximum reflectance:	-42.7 dB
B	1.1502	34.218				
b	1.1502	34.218				

OTDR Report (1550 nm (9 μm))

Event Table

Type	No.	Pos./Length (km)	Loss (dB)	Reflectance (dB)	Attenuation (dB/km)	Cumulative (dB)
First Connector	1	0.0000	---	-43.7		0.000
Section		1.0563	0.201		0.190	0.201
Reflective	2	1.0563	0.453	-50.6		0.655
Section		0.0916	0.026		0.286	0.681
Reflective	3	1.1478	---	> -24.0		0.681

Macrobend

Position (km)	Delta Loss (dB)

Pass/Fail Thresholds

	1550 nm (9 μm)

Test Parameters

	A → B
Wavelength (nm)	1550 nm (9 μm)
Range (km)	1.3000
Pulse (ns)	100
Duration (s)	5

Test Settings

	A → B	Macrobend Wavelengths	Macrobend Delta Loss (dB)
IOR	1.468325		
Backscatter (dB)	-81.87		
Helix factor (%)	0.00		
Splice loss detection threshold (dB)	0.020		
Reflectance detection threshold (dB)	-72.0		
End-of-fiber detection threshold (dB)	5.000		