



PREMIUM QUALITY



Product Brochure

Manufacturer & Supplier of All Types of Nut Bolts, Socket Head Cap Screw, Socket Countersunk Screw, Socket Set Screw (Grub), Studs, Machine Screws, T-Bolts, Square (T.P.) Bolts, Nylock Nuts, Washer in High Tensile & M.S., Nut Bolts & Fasteners Products.



SHIV Nut Bolt



Company Profile

Shiv Nut Bolt is A Company With One Stop Solution To Most Of Your Needs Regarding Nut, Bolt And Washers... The Company Founded By Owner With Expertise in Bolt Manufacturing, Since More Than a Decade And is Growing Rapidly With Motto To Provide Complete Bolt Related Solution For The Customers.

Our Wide Range Of Products Covers High Tensile Hex Bolt, Socket Countersunk Screw (CSK), Socket Head Cap Screw (LN), Socket Set Screw (Grub), Machine Screws, Studs, T- Bolt And Covering Almost The Entire Range Of Bolts That Are Used In Agriculture And Industrial Applications.

We Are Having Customised Solutions For Machine Tools Industry, Hardware Industry And Other Industries As Well... We Are Also Providing Solutions For Special Purpose Fasteners Products To Our Esteemed Clients With The Best Of The Quality. So They Always Trust Us For Their Bolt And Nut Related Requirements....

Manufacturer & Supplier of
All Types of Nut Bolts & Washer



www.shivnutbolt.com



SHIV Nut Bolt

Manufacturer & Supplier of
All Types of Nut Bolts & Washer

SH 01 High Tensile Full Thread Bolt



Grade 8.8, 10.9, 12.9, B7 / R, B, S, V
Size M5 to M30, 3/16 To 1"
Material Alloy Steel As Per Grade

SH 02 High Tensile Half Thread Bolt



Grade 8.8, 10.9, 12.9, B7 / R, B, S, V
Size M6 to M30, 1/4 To 1"
Material Alloy Steel As Per Grade

SH 03 MS Full Thread Bolt



Grade 4.6, 5.6/△
Size M5 to M30, 3/16 To 1"
Material Mild Steel - 1008, 1010, 1018

SH 04 MS Half Thread Bolt



Grade 4.6, 5.6/△
Size M6 to M30, 1/4 To 1"
Material Mild Steel - 1008, 1010, 1018

SH 05 SS Bolt



Grade 202, 304, 316
Size M5 to M16, 1/4 To 5/8"
Material Stainless Steel

SH 06 Special Bolt (Non Standard Bolt)



Grade As Per Customer Requirement
Size As Per Drawing or Sample
Material As Per Requirement



SHIV Nut Bolt

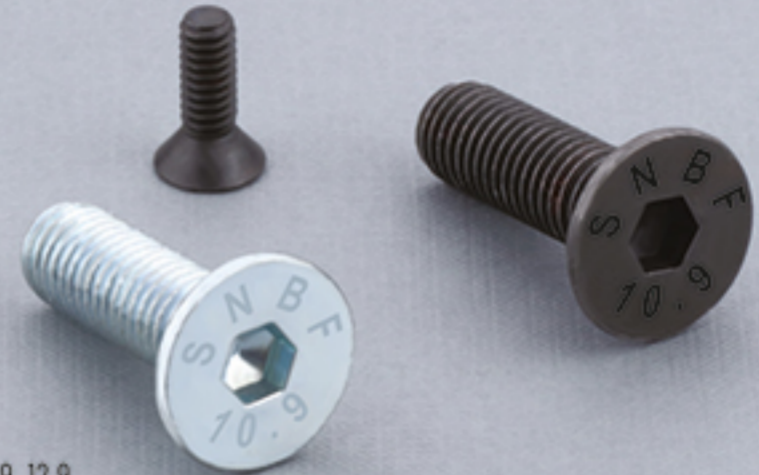
Manufacturer & Supplier of
All Types of Nut Bolts & Washer

SH 07 Socket Head Cap Screw (Ln Bolt)



Grade 10.9, 12.9
Size M3 to M30, 5/32 To 1"
Material Alloy Steel

SH 08 Socket Countersunk Screw (CSK)



Grade 10.9, 12.9
Size M3 to M20, 5/32 To 3/4"
Material Alloy Steel

SH 09 Socket Set Screw (Grub)



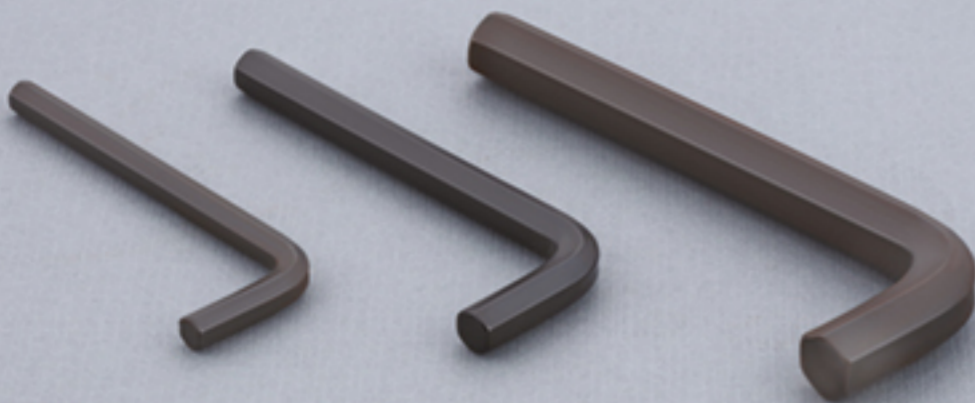
Grade 12.9
Size M3 to M16, 3/16 To 5/8"
Material Alloy Steel

SH 10 Socket Button Head Cap Screw



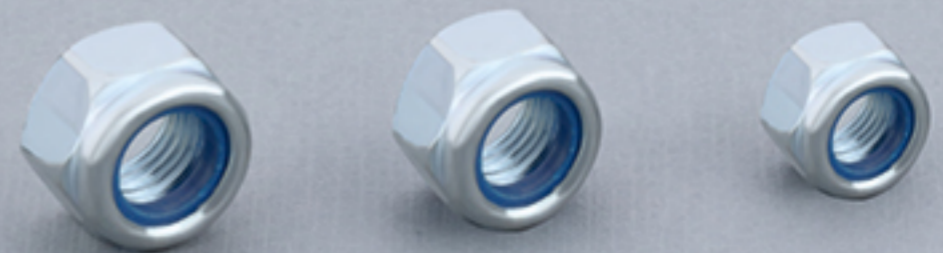
Grade 12.9
Size M3 to M12
Material Alloy Steel

SH 11 Allen Key



Grade -
Size M1 to M14, 1/16 to 1/2
Material Chromium Vanadium Steel

SH 12 Nylock Nut



Grade -
Size M4 to M30, 3/16 to 1"
Material Nylon, Mild Steel, White Zinc



SHIV Nut Bolt

Manufacturer & Supplier of
All Types of Nut Bolts & Washer

SH 13 Square (T.P.) Bolt



Grade MS, 8.8
Size 3/8, 1/2, 5/8
Material MS (1010), 8.8 (Boron Steel)

SH 14 T - Bolt



Grade MS
Size 3/8, 1/2, 5/8, 3/4
Material Mild Steel

SH 15 Handle Pin



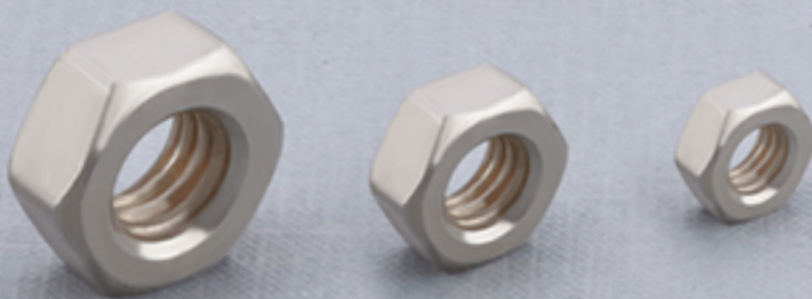
Grade MS
Size 5/16, 3/8, 1/2
Material Mild Steel

SH 16 MS Nut (CSK, CDF, DF, EL, Lock, Long,)



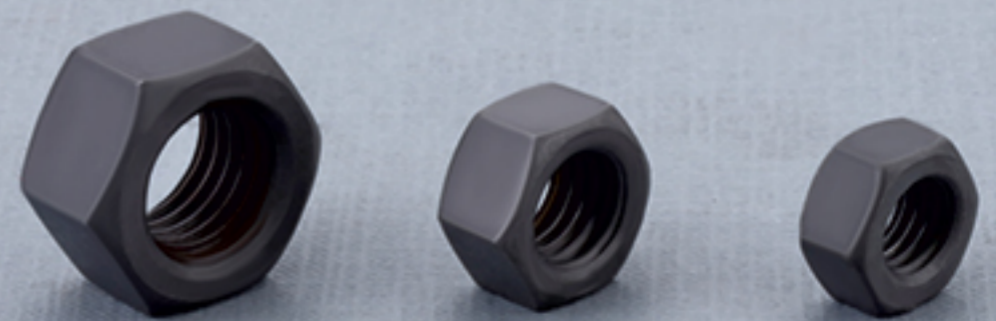
Grade MS
Size M3 to M30, 1/8 to 1.5"
Material Mild Steel

SH 17 SS Nut



Grade 202, 304, 316
Size M5 to M16, 1/4 to 5/8
Material Stainless Steel

SH 18 High Tensile Nut



Grade 8, 10, 12
Size M4 to M30, 3/16 to 1"
Material Alloy Steel as Per Grade



SHIV Nut Bolt

Manufacturer & Supplier of
All Types of Nut Bolts & Washer

SH 19 J Bolt



Grade -
Size 1/4, 5/16
Material Mild Steel

SH 20 U Bolt



Grade -
Size 1/4, 5/16, 3/8 & 6mm, 8mm, 10mm
Material Mild Steel

SH 21 L bolt



Grade -
Size 1/4, 5/16
Material Mild Steel

SH 22 Foundation Bolt



Grade -
Size 3/8, 1/2, 5/8, 3/4, 7/8, 1", 1.25", 1.5"
Material Mild Steel

SH 23 Pipe Bolt



Grade -
Size 5/16
Material Mild Steel

SH 24 Stud



Grade As Per Customer Requirement
Size As Per Drawing or Sample
Material As Per Requirement



SHIV Nut Bolt

Manufacturer & Supplier of
All Types of Nut Bolts & Washer

SH 25 Wire & Roofing Nail



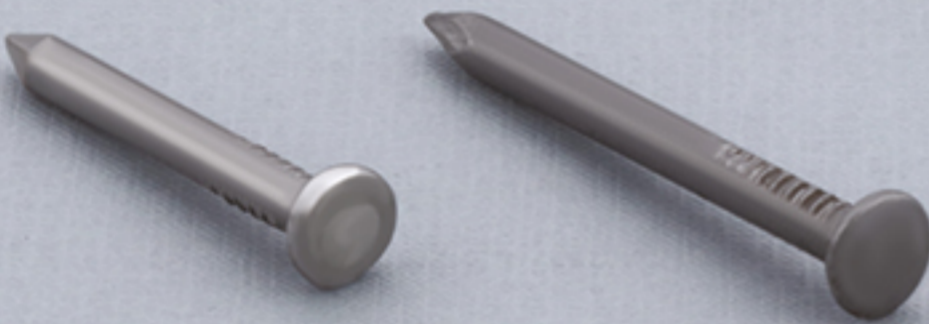
Grade -
Size Gauge (6, 8, 10, 12, 14, 17, 19, 20) & Inch (1.5", 2", 2.5", 3", 4", 5", 6")
Material Mild Steel

SH 26 MS Washer



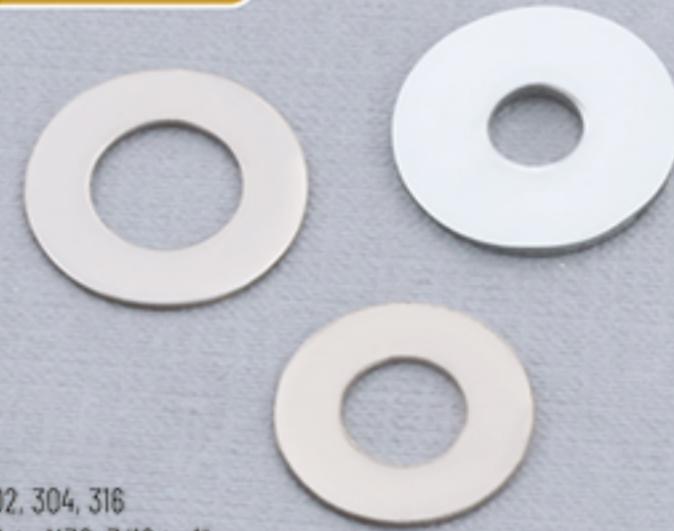
Grade -
Size 3/16 to 3"
Material Mild Steel

SH 27 Jasti Khila



Grade -
Size 1.5", 2", 2.5", 3", 3.5", 4", 5", 6"
Material Mild Steel

SH 28 SS Washer



Grade 202, 304, 316
Size M4 to M30, 3/16 to 1"
Material Stainless Steel

SH 29 Rivet



Grade As Per Customer Requirement
Size As Per Drawing or Sample
Material As Per Requirement

SH 30 Spring Washer



Grade Graded & MS
Size 3/16 to 1.5" & M5 to M39
Material EN 42 & MS



SHIV Nut Bolt

Manufacturer & Supplier of
All Types of Nut Bolts & Washer

SH 31 Eye Bolt



Grade As Per Customer Requirement
Size As Per Drawing or Sample
Material As Per Requirement

SH 32 Carriage Bolt



Grade -
Size 1/4, 5/16, 3/8, 7/16, 1/2, 5/8
Material Mild Steel

SH 33 Wedge Anchor



Grade -
Size 8mm to 20mm
Material Mild Steel

SH 34 Anchor Fasteners Pin Type



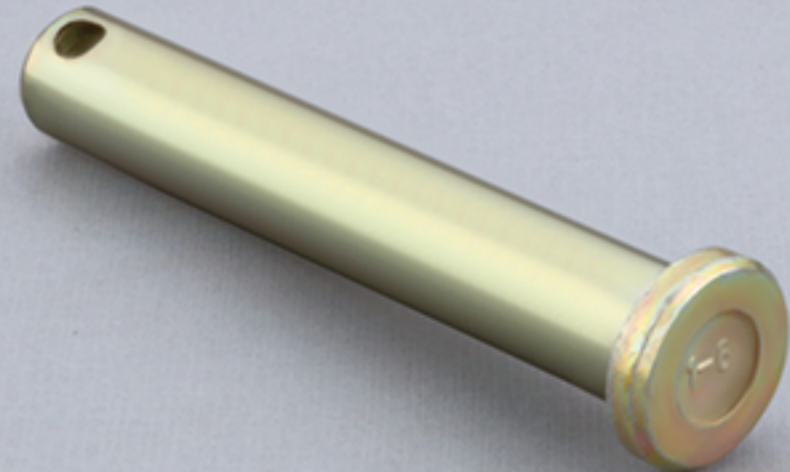
Grade -
Size 6mm to 20mm
Material Mild Steel

SH 35 Linch Pin



Grade -
Size 4.5mm, 5mm, 6mm, 7mm, 8mm, 10mm
Material Mild Steel

SH 36 Tractor Pin



Grade -
Size 1/2, 5/8, 3/4, 7/8, 1"
Material Mild Steel



SHIV Nut Bolt

Manufacturer & Supplier of
All Types of Nut Bolts & Washer

SH 37 Wheel Bolt (Hub Bolt)



Grade As Per Customer Requirement
Size As Per Drawing or Sample
Material As Per Requirement

SH 38 Machine Screw (CSK Philips & Slotted)



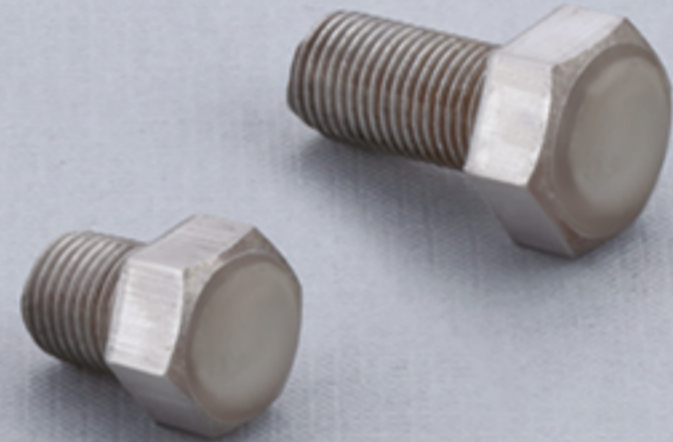
Grade -
Size 5/32 to 3/4, M4 to M16
Material Mild Steel

SH 39 Trut & Pan Combination Bolt



Grade -
Size 5/32, 3/16, 1/4, M4, M5, M6
Material Mild Steel

SH 40 Special Thread Bolt



Grade As Per Customer Requirement
Size BSP, UNF, UNC, BSF, BSW & MM Fine Pitch
Material As Per Customer Requirement

SH 41 Self Drilling Screw



Grade -
Size 10 No. & 12 No.
Material Mild Steel

SH 42 Rawl Bolt



Grade -
Size 6mm to 12mm
Material Mild Steel



SHIV Nut Bolt

Manufacturer & Supplier of
All Types of Nut Bolts & Washer

SH 43 Rotavator Fasteners Kit



Grade 8.8, 10.9
Size Full Range (Nut, Bolt, Washer)
Material As Per Grade



SH 44 Plough Fasteners Kit



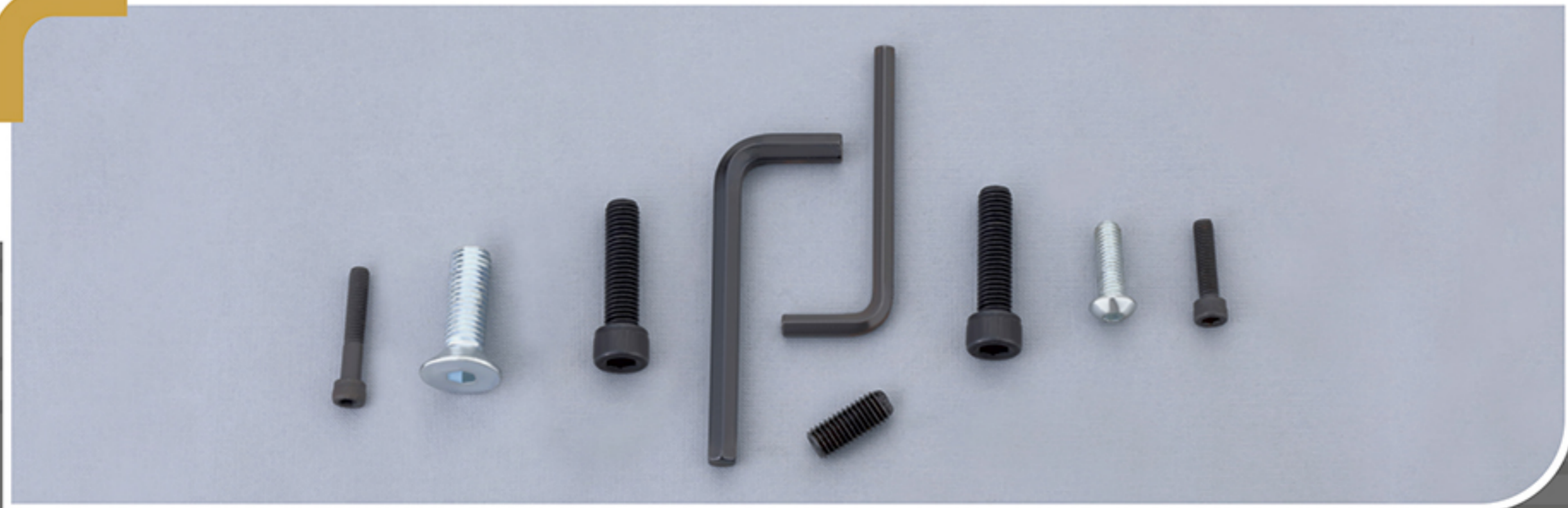
Grade MS, 8.8
Size Full Range
Material As Per Grade





SHIV Nut Bolt

Manufacturer & Supplier of
All Types of Nut Bolts & Washer





Get In Touch



SHIV Nut Bolt

Office Address :

Plot No. 45, Golden Industrial Area Street No. 2,
Kishor Enterprise Street, B/h. Rolex Ring,
Near SBI Bank, Saibaba Circle, Kothariya,
Rajkot - 360022 (Gujarat) INDIA.

Factory Address :

Padasan,
Rajkot - Bhavangar Highway
Ta. : Rajkot,
Dis. : Rajkot - 360020

Mayur Asodariya

+91 99139 15456

Milan Asodariya

+91 75677 54052

+91 93162 45545

shivnutbolt@gmail.com

www.shivnutbolt.com

WE SUPPORT

